

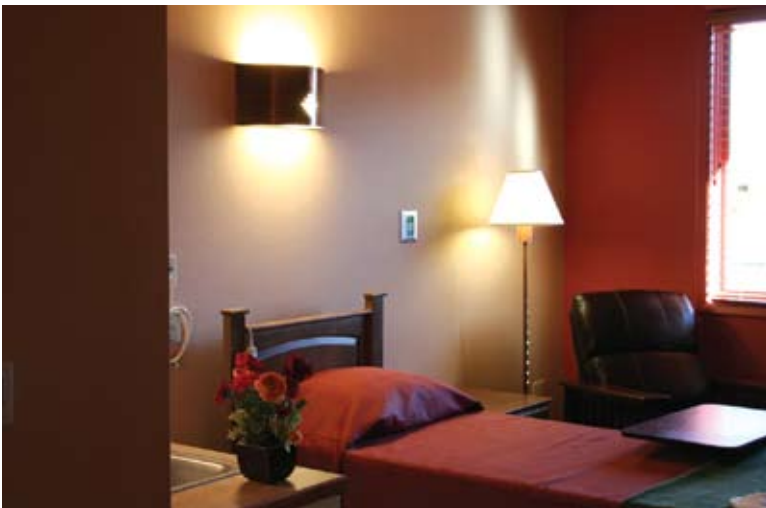
# LIGHTING FOR HEALTHCARE



Reception



Entrance Lounge



Typical Patient Room

808 Floor Lamp

**Project: Advanced Healthcare  
Albuquerque, NM**

**Architect: Donald Kirkman  
Auburn, WA**

**Interior Design: Color 43/Christie Jones  
Oakland, CA**

This project is a short stay rehab facility treating patients who have had knee, hip or other surgeries. Designed to be an attractive alternative to nursing homes that typically handle these patients, its design intent is to look more like a hotel than a nursing home.

Borden Lighting provided a variety of decorative fixtures, including standard, modified and custom. Modified fixtures provide an opportunity to tailor a standard fixture to make it more project specific. Custom fixtures can meet specific needs in a more decorative way than standard fixtures can. The fixtures shown here utilize, to varying degrees, aluminum with 100% recycled content, copper with 80-90% recycled content and an antique finish that is sealed with wax. All the fixtures utilize high efficiency compact fluorescent lamps.



Private Dining

M322



Typical Corridor

322-24

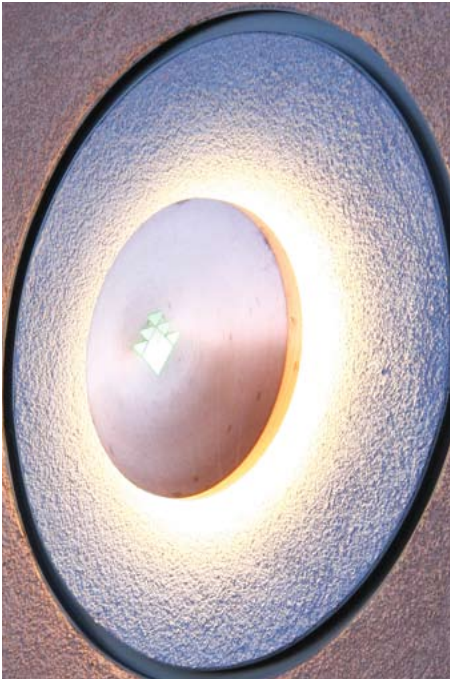
Design  
Sustainability  
Value

**BORDEN  
LIGHTING**

[www.bordenlighting.com](http://www.bordenlighting.com)



Advanced Healthcare, Albuquerque, NM



Signature Wall Medallion



Room # Sconce M552



Patient Bathroom 572-18



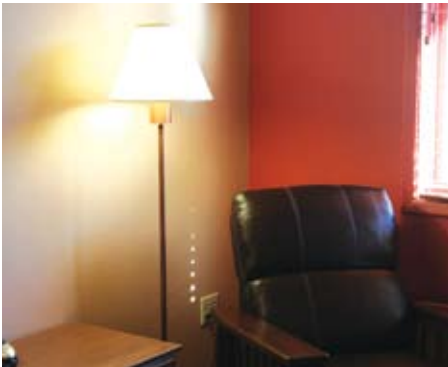
Entrance Lounge 322-41



Bed Light - Two - Circuit Up & Down



Patient Room



Floor Lamp FL808



Dining Room